

PROJECT TEAM

OWNER

301 FL MANAGER, LLC

DEVELOPER

DITTO RESIDENTIAL
ZUSIN DEVELOPMENT

LAND USE COUNSEL

HOLLAND & KNIGHT

ARCHITECT

DEP

CIVIL ENGINEER

CAS ENGINEERING

LANDSCAPE ARCHITECT

PARKER RODRIGUEZ

STRUCTURAL ENGINEER

EHLERT BRYAN

MEP ENGINEER

CFR ENGINEERING

TRAFFIC CONSULTANT

GOROVE/SLADE ASSOCIATES

LEED CONSULTANT

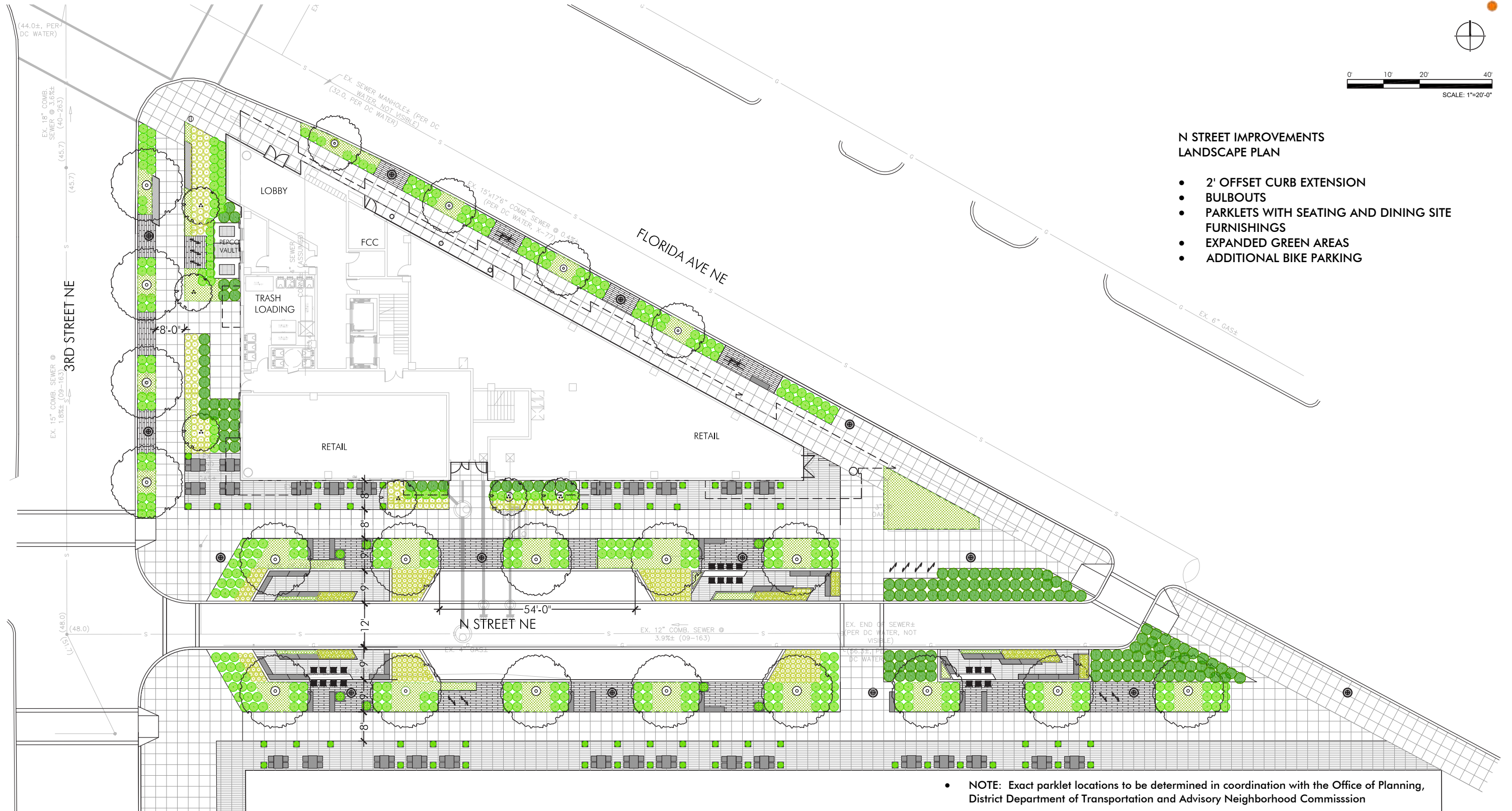
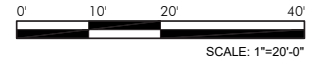
US-ECO LOGIC

DRAWING LIST

A-0.0	COVER SHEET
A-1.0	N STREET IMPROVEMENTS
A-1.1	BAY WINDOW PROJECTIONS
A-1.2	BICYCLE GUTTER STUDY
A-1.3	SECTION PERSPECTIVE - FLORIDA AVENUE - LOOKING EAST
A-1.4	FLORIDA AVENUE - STREET SECTION
A-1.5	BRICK VENEER OPTIONS

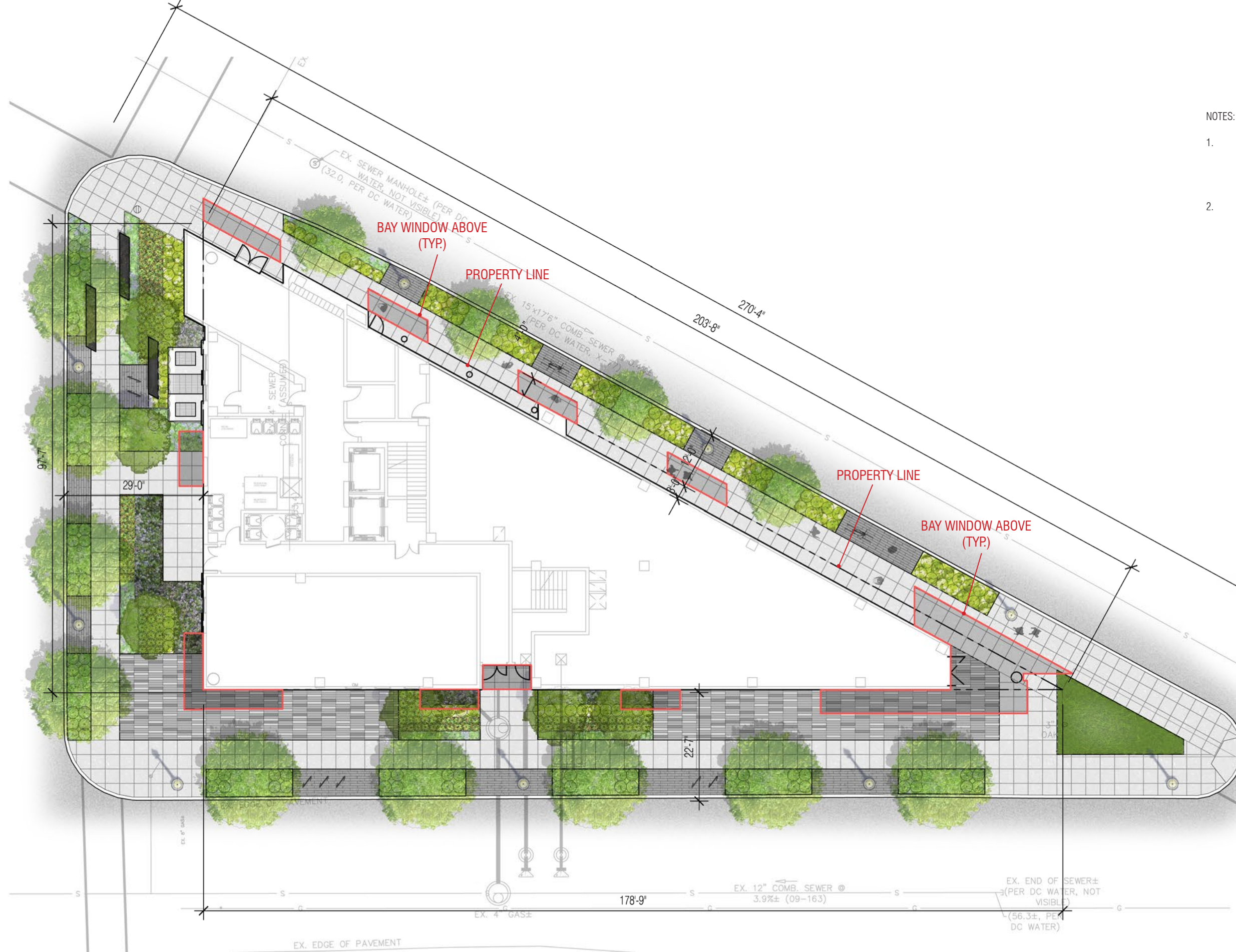


301 FLORIDA AVENUE POST HEARING



**N STREET IMPROVEMENTS
LANDSCAPE PLAN**

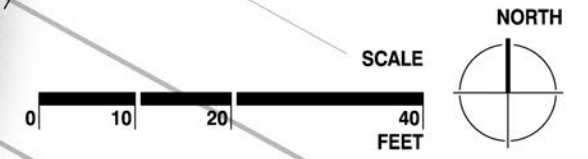
- 2' OFFSET CURB EXTENSION
- BULBOUTS
- PARKLETS WITH SEATING AND DINING SITE FURNISHINGS
- EXPANDED GREEN AREAS
- ADDITIONAL BIKE PARKING



NOTES:

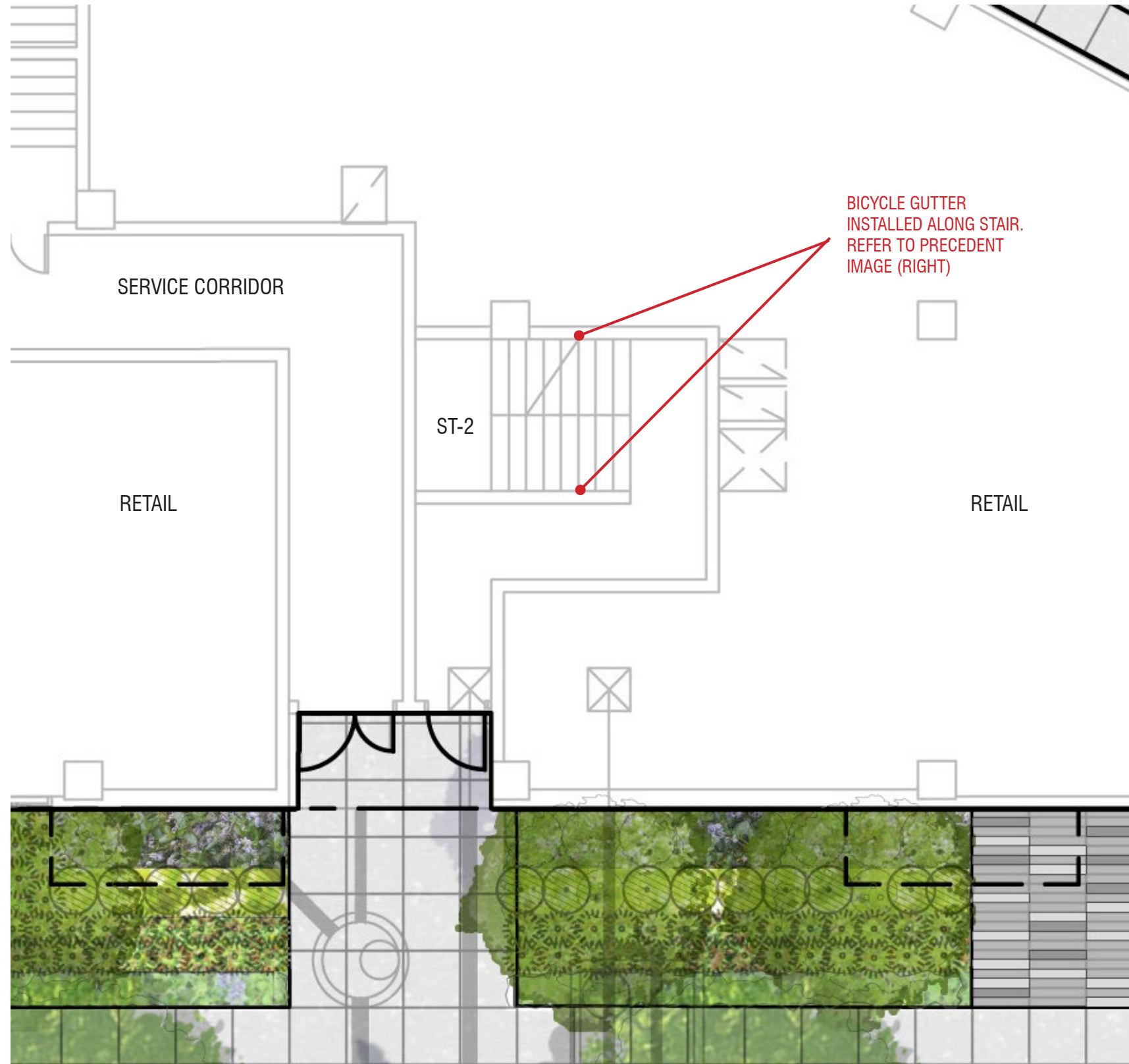
1. PERCENTAGE OF BAY WINDOW WIDTH TO PROPERTY DIMENSION ALONG FLORIDA AVENUE: 49% (99' - 10" / 203' - 8")
2. PERCENTAGE OF BAY WINDOW WIDTH TO BLOCK DIMENSION ALONG FLORIDA AVENUE: 37% (99' - 10" / 270' - 4")

KEY / LEGEND:



BAY WINDOW PROJECTIONS

A-1.1

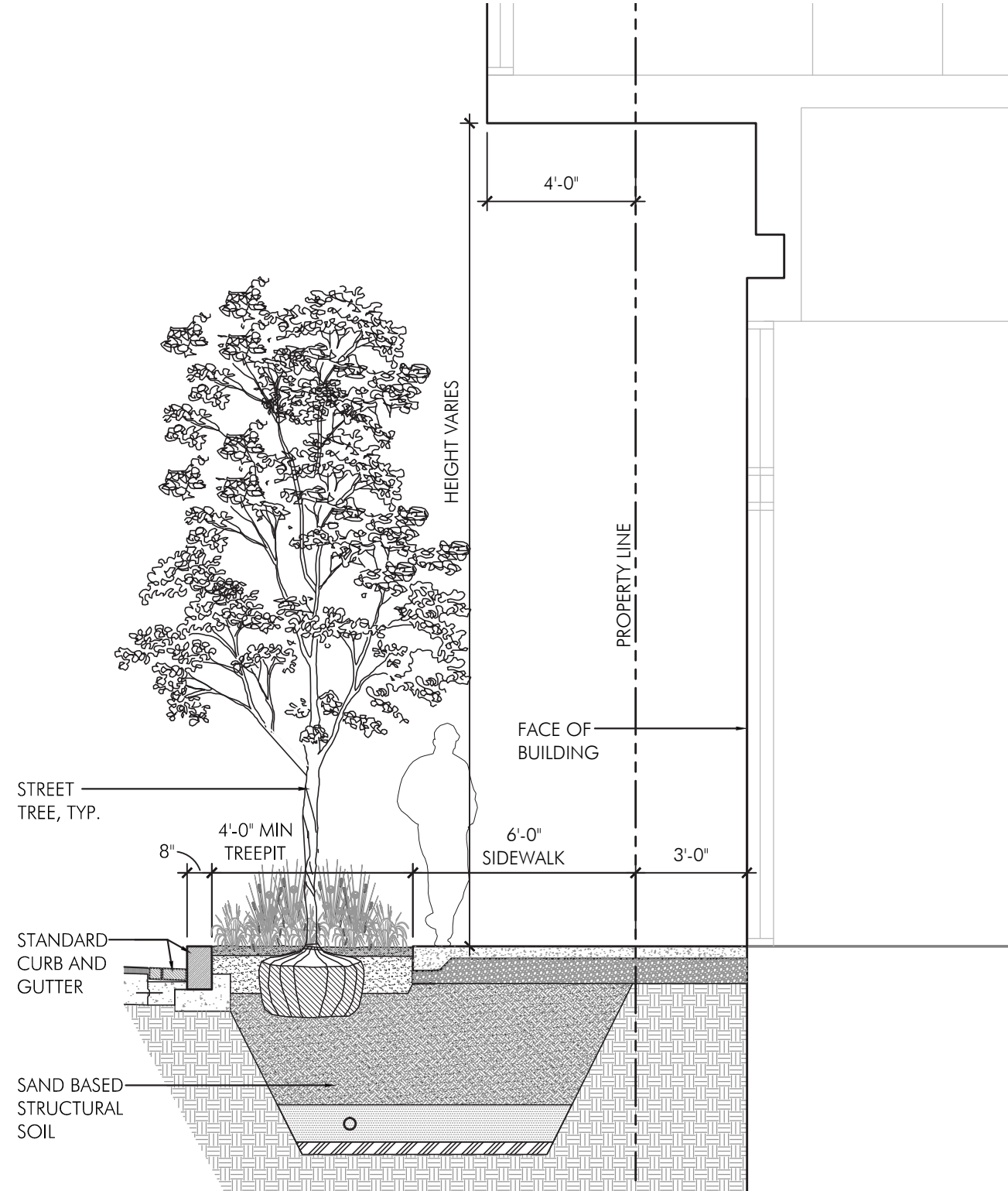


BIKE GUTTER PRECEDENT
(GOOGLE IMAGES)



SECTION PERSPECTIVE
FLORIDA AVENUE - LOOKING EAST

A-1.3



FLORIDA AVENUE - STREET SECTION
SCALE: 1/4" = 1'-0"

FLORIDA AVENUE - STREET SECTION

A-1.4



1. LIGHT PUMICE
K86-237



2. DARK PUMICE
K09-7053